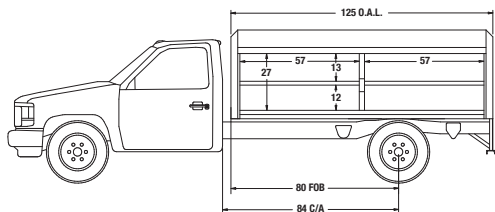


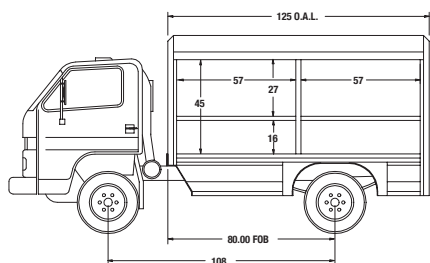


Family owned and
operated since 1904.

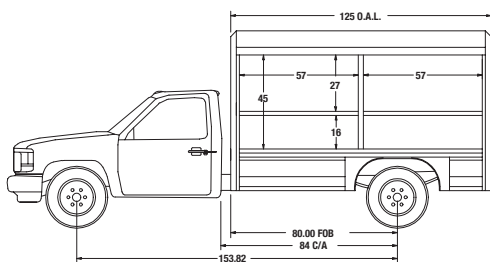
Mickey Truck Bodies is the nation's leading designer and manufacturer of all-aluminum roll-up door bodies for the automotive battery industry. If you don't see the exact model you need, contact us at **1-800-334-9061** so we can custom design and quote to your specific requirements.



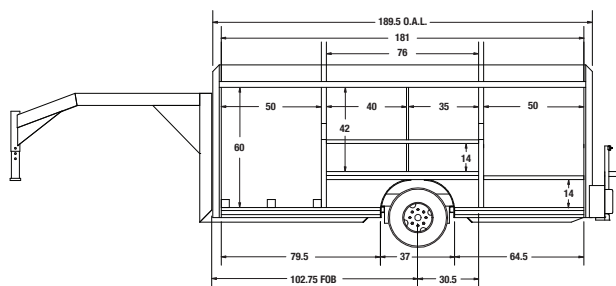
Four-Bay Mini for GMC/Chevrolet HD3500
Capacity: 127 batteries* Access: side load
GVW: 13,400 Bays: 57"



Four-Bay Mini Cab-over
Capacity: 160 batteries* Access: side load
GVW: 13,500 - 15,500 Bays: 57"



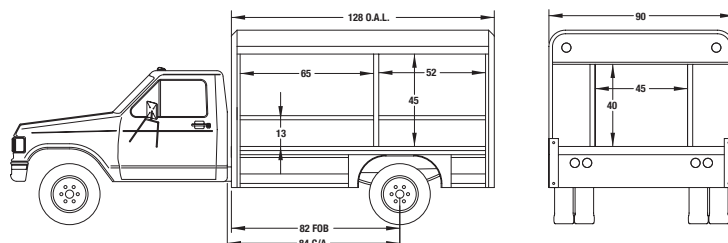
Four-Bay Mini Conv.
Capacity: 160 batteries* Access: side load
GVW: 13,500 - 15,500 Bays: 57"



Gooseneck Trailer

Capacity: 180 batteries*
GVW: 12,699

Access: side load
Bays: 50", 76" wheelhouse

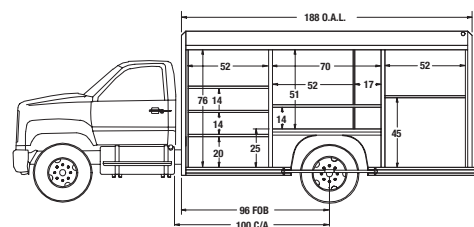


Four-Bay Mini Rear Loader

(also available in cab-over version)

Capacity: 164 batteries*
GVW: 15,000 - 21,000

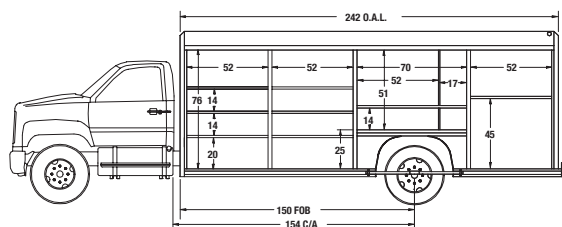
Access: rear and side load
Bays: 65", 52", 45" rear bay



Six-Bay Conv.

Capacity: 275 batteries*
GVW: 25,900 - 28,000

Access: side load
Bays: 52", 70" wheelhouse



Eight-Bay Conv.

Capacity: 405 batteries*
GVW: 29,000 - 33,000

Access: side load
Bays: 52", 70" wheelhouse

* All capacities based on an average 40 lb. battery weight.

Mickey Truck Bodies Inc
Manufacturing & Corporate Office
1305 Trinity Ave | PO Box 2044 | High Point, NC 27261

Toll Free: 800.334.9061 / Local: 336.882.6806 / Fax: 336.889.6712

ACDelco

ACDelco Battery Body Specifications\Payload (EST.)

Style/Model	Door	Length	Batteries	C/A**	GVWR
4-bay Mini for GMC/Chevrolet HD3500	57W	125"	127*	84"	13,400
4-bay Mini C/O	57W	124.5"	160*	84"	13,500 - 15,500
4-bay Mini Conv.	57W	124.5"	160*	84"	13,500 - 15,500
4-bay Mini R/L	65W/52W	128"	164*	84"	15,000 - 21,000
Gooseneck Trailer	50W/76W	189.5"	180*	102"	12,699
6-bay Conv.	52W/70W	188"	275*	102"	25,500 - 29,000
8-bay Conv.	52W/70W	242"	405*	154"	29,000 - 33,000

* All capacities based on an average 40 lb. battery weight. | ** C/A is determined by chassis



Parts and Service

Mickey Truck Bodies has long been recognized as the leading supplier of parts in terms of availability and service. We offer a large inventory of stock parts for same-day shipping on all orders received by 2 PM, and all fabricated parts are shipped within one to three working days.

Parts are available from our main manufacturing facility in High Point, NC as well as from any of our regional Reconditioning and Service Centers located throughout the country.

Any part that is received damaged, or is not the exact part ordered, will be replaced and shipped the day of notification at no charge, with no questions asked.

ACDelco Battery Body Standard Features

- Computer designed all aluminum construction
- Machine castings enhance strength and durability
- Most efficient working profile in the industry
- Integrated All-Weather Door Loc™ system
- Adjustable air vents installed in front bulkhead
- Battery coating on all bay walls, floors and shelves
- Plastic bay liners on walls, floors and shelves
- Reinforced shelves to accommodate batteries
- One-piece front and rear bulkhead skins
- Paint and apply decals to ACDelco specifications

